

## St. Thomas Episcopal Church Celebrates Centennial

BY CHRIS BRANTLEY  
EDITOR

One hundred years ago, on November 26, Maria Henderson donated a lot on what is now St. Thomas Avenue. She gave the land, stipulating that a church must be built on it within the next year, or the plot would return to her.

The story goes that Maria was angered when the minister and the trustees of the "union" church no longer permitted the Episcopal congregation from Isle of Hope to use their facility.

Miss Henderson deeded the property on November 28, 1922. She would later gift another lot in March 1923 to build a rectory. On December 21, 1922, Bishop Reese and around 20 Episcopal Members and friends met at the home of Kenneth R. Bragg to talk about building the new Church. On November 28, 2023, Bishop Reese laid the cornerstone for the first church building.

A century later, St. Thomas Episcopal Church still stands



**The St. Thomas Chapel built in 1923 still stands on the original lot donated by Maria Henderson.**  
**Photo Submitted**



**Maria Henderson**

firm on the same piece of land. During the 100 years, the people of St. Thomas have built more than just a church building. They have created a thriving community that has been a light to the Isle of Hope community for 100 years.

Many current members point to the sense of community and family as the quality that makes the Church so alive. It is not uncommon to see multiple generations, some related to the founders and early families,

who still worship and serve together at the Church. Others passed, but handed the torch to their children and grandchildren. Some descendants have attended the Church their entire lives.

Mitch Green sums up St. Thomas as "a wonderful church family that spans the generations."

The Church celebrates its Centennial over the next year. The celebration kicks off on December 18, 2022, with a visit from South Georgia's Bishop Frank Logue. Baptisms and confirmations will take

**- Continued on page 6 -**



# Front Porch

BY CHRIS BRANTLEY, EDITOR

I used to love the ocean, but now I prefer the river.

As Mark Twain said: "The river has great wisdom and whispers its secrets to the hearts of men."

Before I started boating, I couldn't really hear the whispers. Now I can, at least, better.

The river is a thing that flows. It rises, and it falls as the moon dictates. You can't control it.

So you either learn how to work with it or get stuck. And life works the same way.

- Continued on page 10 -

## Isle of Hope News

The Isle of Hope News is a quarterly publication serving Isle of Hope area residents & advertisers.

It was started by Isle of Hope resident Ed Yannett in 2011 and mails to 2,400 residents in Isle of Hope, Dutch Island, and surrounding areas.



Merry Christmas and Happy 2023! - The Brantleys Plus One

## BRINGING HOLIDAY CHEER

**HERB CREEK**  
LANDSCAPE SUPPLIES  
herbcreek.com

**Herb Creek Sandfly**  
7402 Skidaway Road  
912.691.0108

**Herb Creek Thunderbolt**  
3005 E. Victory Drive  
912.356.1575

Let us show you how at Herb Creek, the one-stop shop for all your holiday needs.

Locally owned and operated by Savannah natives since 2004. "Best of Savannah" since 2014.

Frasier Fir Christmas Trees (Delivery/Setup Available) · Poinsettias · Live Wreaths & Garland · Holiday Decor



# Making a Difference

BY MARIANNE KOSIEWICZ

Have you heard about The Market at 3 West Ridge? This annual boutique returns with a full complement of upscale items which are not available locally, to include clothing, shoes, jewelry, personalized stationery, purses, and table accents. In addition, the boutique sells a bountiful supply of plants which can be purchased during The Market days or pre-ordered for pick up later in the Spring.

But far better than what you get is what you give. 100% of the Market's profits go to supporting two Savannah nonprofit organizations which benefit at-risk children and youth. This year Heads Up Guidance Services, Inc. (HUGS) and People of Action Caring for Kids (P.A.C.K.) were selected. With the choice of HUGS and P.A.C.K., The Market will be combating the intertwined evils of emotional challenges and food insecurity.

HUGS' professional counselors provide a comprehensive range of mental health services, both virtually and in person. One of their programs addresses topics critical to teens, to include substance abuse education, anger and stress management, and the ramifications of bullying. Youth and Family counseling fo-



cuses on helping families develop emotionally healthy lifestyles. HUGS also conducts parent support groups as well as a women's abuse and trauma group. Since 2009 HUGS has served over 2500 individuals and families in our community and works with universities to provide training for Masters

level interns. Longtime IOH resident Ellen Bradley and HUGS Community Relations Volunteer stated, "HUGS works also as an advocate in the community and schools to promote mental health services."

P.A.C.K. was started by a mom who wanted to teach

- Continued on page 4 -

*The Market*  
at 3 west ridge

St. Peter's  
Episcopal Church  
3 West Ridge Road  
Savannah, GA 31411  
(912) 598-7242  
saintpeterssav.org

a shopping boutique  
of select national vendors  
& spring plant sale

to benefit

   
Heads Up Guidance Services      People of Action Caring for Kids

Tuesday Feb. 7 th , 5 p.m. - 7:30 p.m.  
with wine and lite hors d'oeuvres  
Wednesday Feb. 8 th , 10 a.m. - 5 p.m.  
Thursday Feb. 9 th 10 a.m. - 4 p.m.



## Making a Difference

- Continued from page 3 -

her sons the importance of helping others.

If you visit P.A.C.K. now, you will see a large warehouse where food bags are assembled – each with a personal message from another child -- and a children's clothing store with a fairy tale feel where foster children and children in crisis can select clothes three times a year.

Staffed entirely by volunteers, 15,000 strong, P.A.C.K. delivers bags of food to 37 local schools and community centers each week and sends food home on Fridays for children in need of nutrition over the weekend. P

.A.C.K. founder and Executive Director, Malena Stone, stated their mission as "changing the lives of children, one bag at a time."


Please join The Market in support of at-risk children in our area.

Shop with us on Tuesday, February 7 from 5:00-7:30 (free wine and appetizers) and on Wednesday, February 8, 10:00-5:00 and Thursday, February 9, 10:00-4:00 (lunch \$10). Tickets \$5, good for all three days and available at the door.

See you at The Market – it's just 13 minutes away!



Photo Submitted by Marianne Kosiewicz



# Crossroad

ANIMAL HOSPITAL

**Ernest Compton, D.V.M.**  
**Melanie S. Bevere, D.V.M.**  
**Stuart Ann Goldberg, D.V.M.**  
**Mary Kelble, D.V.M.**

**1201 E. Montgomery Crossroad**  
**Savannah, GA 31406**

**(912) 927-4343**  
**[www.crossroadah.com](http://www.crossroadah.com)**



**LET ME HELP YOU WITH  
YOUR HOLIDAY GIFTS! WE  
HAVE SOME GREAT GIFT  
SETS COMING IN  
SEPTEMBER.**



## SCOUT & CELLAR®

CLEAN-CRAFTED WINE

WINE CONSULTANT

*Lisa Yarnett*

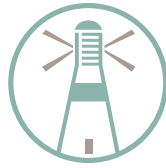
**912-596-4345**

**[www.scoutandcellar.com/uncorkwithme](http://www.scoutandcellar.com/uncorkwithme)**

**Scan me**







Dental Harbor  
COSMETIC & RESTORATIVE DENTISTRY

WORLD-CLASS DENTAL CARE CLOSE TO HOME



Schedule  
Online Now!

COMPREHENSIVE CARE FOR COMPLETE DENTAL WELLNESS  
BOTOX® • INVISALIGN® • SMILE MAKEOVERS

*Abby L. Dew, DDS*

50 MEETING STREET, SUITE B • SKIDAWAY ISLAND • 912.480.0804

DENTALHARBOR.COM •   @DOCTORABBYDEW



# St. Thomas Centennial

- Continued from page 1 -

place during the service, and the Church will serve brunch following the service at 10:30 am.

On February 1, 2023, St. Thomas will launch its Capital Campaign with a kick-off dinner. Then on April 29, 2023, they will hold a Roaring '20s-themed Celebration Gala in the Parish Hall.

The celebration ends with a Neighborhood Street Party on December 16, 2023. The event features live music, food trucks, and other fun activities. All of Isle of Hope is invited to join the festivities.

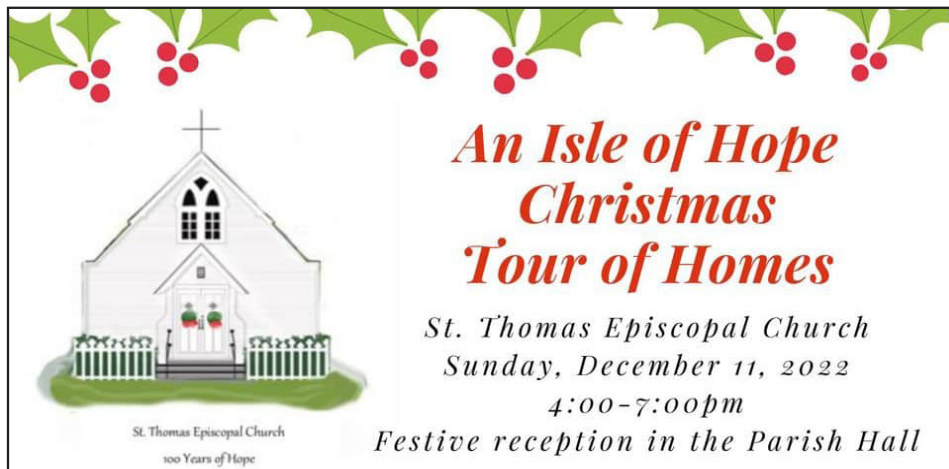
In an age of change, St. Thomas Church has cultivated

a community that has served and sustained its membership, as well as the broader Isle of Hope Community.

Yes, St. Thomas is a place, on a piece of land, with a building, but more than that, the Church is a community of people, "a huge, loving, caring extended family," according to Tracy Edgar.

Maria Henderson and

the founding members of the Church may not have envisioned what St. Thomas Church would become over a century. But surely, the founders would be happy to know that something they set in motion with the hand of God not only endures but continues to bring joy and comfort to its members and the greater Isle of Hope community.

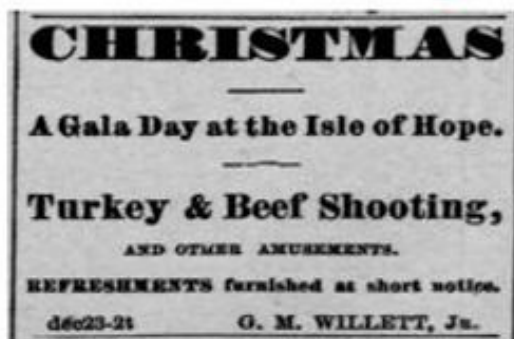


***An Isle of Hope  
Christmas  
Tour of Homes***

*St. Thomas Episcopal Church  
Sunday, December 11, 2022  
4:00-7:00pm  
Festive reception in the Parish Hall*

St. Thomas Episcopal Church  
100 Years of Hope

## We Hope All Your Holidays Are Gala Days!



(December 25, 1876, Savannah Morning News advertisement for The Willett House restaurant and hotel at Isle of Hope)



**Isle of Hope Historical Association**  
Join us today at [iohha.org/memberships](http://iohha.org/memberships)

# SANDFLY FLOWER SHOP



A FULL SERVICE FLORAL STUDIO  
AND GIFT BOUTIQUE

8419 Ferguson Avenue 912.604.6852 @sandflyflowershop



*where a trip to the dentist  
is a day at the beach*

**NEW PATIENT SPECIAL**

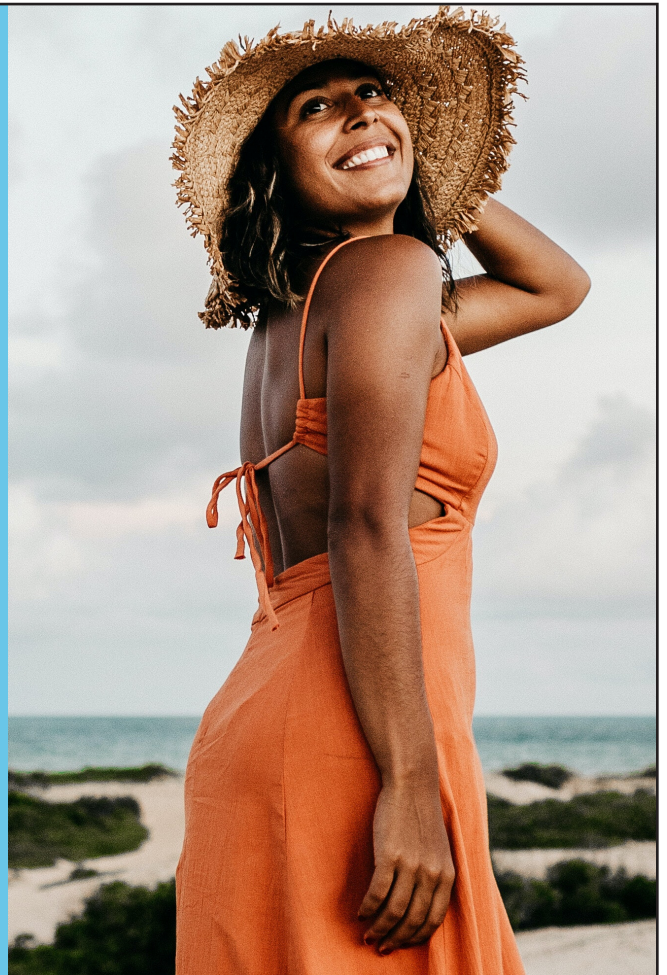
**\$149** Exam, Cleaning  
and X-Rays

& Get \$100 In-Office Bleaching  
When You Get Your Teeth Cleaned

7360 SKIDAWAY RD, SUITE H-2

912-349-0472

WWW.SANDFLYFAMILYDENTAL.COM

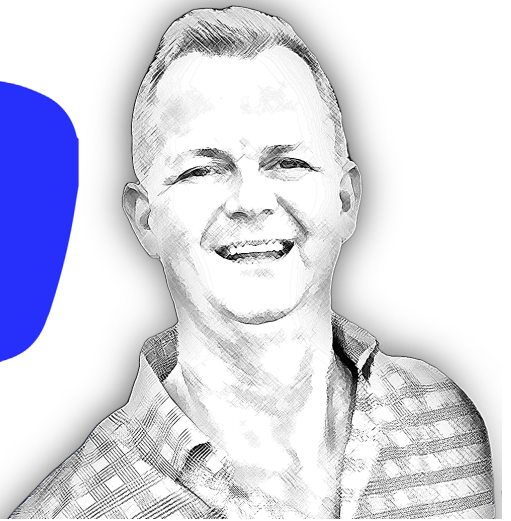




# Ask?

## Mr. Ed

Straight From The Horse's Mouth



## 5 Things You MUST Know About Wills!

BY ED YANNETT

First things first, this topic sucks! But we need to make sure the people we love are taken care of in a way that is easy for them and according to our wishes when we expire! As I have said a million times, "We all have more money than time." No matter your age, although it is more urgent as you get older to handle this business, get a will as soon as you can! I've written this so you can read each question as a topic on its own. So skip to whichever questions you have about wills, and then create your own.

### What is a will, and what does it do

A will is a legal document that allows you to specify how to distribute your assets upon your

death. You and your witnesses must sign the will, which becomes valid upon your death.

If you die without a will, state law dictates how to distribute your asset, which can be a nightmare. You DO NOT want your family going through probate court and the court deciding how to distribute your assets! A will typically names an executor responsible for carrying out your wishes. The executor will file the will with the probate court, and the court will oversee the distribution of assets. The probate process can be costly and time-consuming, so many people create an estate plan that includes a trust or other mechanisms to avoid probate.

However, a will is still an essential part of an estate plan. You use it to name guardians for minor children or pets, specify

funeral arrangements, make charitable donations, and ensure that your assets are distributed according to your wishes.

### The different types of wills

There are several types of wills, each with its advantages and disadvantages.

A Simple Will is the most straightforward type and can be used to leave all of a person's assets to a single beneficiary.

A Testamentary Will is more complex and can be used to specify how assets should be divided among multiple heirs.

A Joint Will is similar to a simple will but is created by two people instead of just one.

Online Wills are becoming increasingly popular as they offer a convenient and affordable way to create a legally-binding document.



Direct: 912-596-4345

or 912-844-9000

Office: 912-356-5001

or 912-232-8580

[www.MyHomeSavannah.com](http://www.MyHomeSavannah.com)

*"Let Our Family Show Your Family the Way Home"*



"Let Our Family Show Your Family the Way HOME!"

Deathbed Wills are created by people on the verge of death and are often used to make last-minute changes to an estate plan.

Holographic Wills are handwritten and don't need to be witnessed, but they can be difficult to prove in court.

### How to make a will

Estate planning is essential for anyone who wants to ensure that their assets get distributed according to their wishes after death. One way to do this is to create a will.

A will is a legal document that outlines how you would like to divide your assets among your heirs. You must be of legal age and sound mind to make a valid will.

It's where you spell out your wishes and how you want things handled when you die. You will

also need to choose an executor who will carry out your wishes. Once you create the will, have two witnesses sign it and notarize it.

After your death, the executor will file the will with the probate court, and the court will distribute your assets according to your will.

### What happens if you don't have a will

(YOU DO NOT WANT THIS OPINION!)

Creating a will is one of the most important things you can do for yourself and your loved ones. Without a will, the state will distribute your assets and decide who cares for your minor children.

THE STATE WILL DECIDE WHAT IS BEST FOR YOUR FAMILY - NO WAY! The process can cause significant delays and

add unnecessary stress to an already difficult time. If you die without a will, your estate will go through probate. Probate is the legal process where a judge determines how to distribute your assets. This process can be lengthy and expensive, especially if there are disagreements among your heirs.

### How to change or update your will

Unfortunately, many people create a will early in their adult life and then wait to update it. Still, it's essential to review your will on an annual basis or whenever there is a significant change in your family or financial situation. Then, if you need to change your will, you can create a new one or add an amendment to an existing will called a codicil. Once you have made the changes, make sure you sign and date the document in the presence of two witnesses.

### Consult an Attorney

Estate planning can be complex, so consult an estate attorney or lawyer before creating your will. If you need a referral, we have a few professionals we have worked with.

The information provided in this article does not, and is not intended to, constitute legal advice; instead, all information, content, and materials available here are for general informational purposes only.





Direct: 912-596-4345  
or 912-844-9000  
Office: 912-356-5001  
or 912-232-8580

[www.MyHomeSavannah.com](http://www.MyHomeSavannah.com)

*"Let Our Family Show Your Family the Way Home"*





# Isle of Hope Christmas Services



## ST. THOMAS EPISCOPAL CHURCH

**Dec. 14, 6pm**  
Blue Christmas Worship

**Dec. 24, 3pm**  
"A Walk to Bethlehem"  
(A family friendly Eucharist)

**Dec. 24, 5pm**  
Traditional Christmas Eve  
Eucharist (Nursery provided)

**Dec. 25, 11:15am**  
Casual Eucharist Outdoors



## ISLE OF HOPE UNITED METHODIST CHURCH

**Dec. 23, 7:30pm** - Traditional Worship

**Dec. 24, 3pm, 5pm, 7pm** - Traditional Worship

**Dec. 24, 3pm & 5pm** - Anchor Worship

**Dec. 25, 3pm, 5pm** - Combined Worship in  
Sanctuary (No Sunday School)

**Dec. 25, 10:30am** - Combined Worship in  
Sanctuary (No Sunday School)



**Jan. 1, 10:30am**  
Combined Worship in  
Ministry Center (No  
Sunday School)



## ISLE OF HOPE BAPTIST CHURCH

**Dec. 10, 6pm**  
Oyster Roast  
Tickets are \$12

**Dec. 24, 5pm**  
Christmas Eve Services



## OUR LADY OF GOOD HOPE CATHOLIC CHURCH

**Dec. 24, 10pm**  
Christmas Eve Service

## Front Porch

### - Continued from page 2 -

The first year I boated, I paid little attention to tides, weather, or winds, which was naive. But I got lucky.

Until one day, I didn't.

I cruised across the Vernon River to Ossabaw and missed Hell Gate, hit a sandbar, and stopped dead.

I guess it was the first time I tried to make the trek at low tide.

Fortunately, the tide was set to turn in 15 minutes. So, we waited and eventually got free.

I quickly learned you get to know the forces you can't control, or you have a pretty rough time. So this past year, I have tried to do that. And, as with most years, there have

been high tides (good times) and low tides (bad times).

Even slack tides, when life seems to putter along and not much appears to be happening.

When you think about it, life is simply an accumulation of days and years that ebb and flow. So if the tides are moving your way, savor the moment. If not, hang in there. The tide always turns.



*"Putting your mind at ease in the comfort of your own home."*



### Our Services Include:

- Companionship - Personal Care
- Meal Preparation - Exercise & Recreation
- Medication Reminders - Light Housekeeping
- Doctors Appointments - Outings & More

Post Office Box 23194 | Savannah, GA 31403

**Call Today! 912-596-4917**

Office Hours: Monday-Friday 9:00 AM - 6:00 PM  
Saturday & Sunday 10:00 AM - 2:00 PM

**VickiesHelpingHands.com**  
**info@vickieshelpinghands.com**

VISA | MasterCard | Discover | American Express | PayPal  
Money Orders | Venmo | Zelle | ApplePay | Google Wallet | CashApp

**24 HOUR  
SERVICES  
AVAILABLE**



**Boat Washing  
Boat Detailing  
Ceramic Coating  
Boat Management**



**buck@vickerymarine.com**

**912-230-8760**

**Email, Call or Text for a Quote Today!**



**newamerican**  
NMLS # 6606 FUNDING



**SCAN TO APPLY!**

*Kelley Sullivan*

Sales Manager | NMLS # 213216

**C: (912) 844-2593**

Kelley.Sullivan@nafinc.com

www.SavannahHomeLoan.com



Georgia Residential Mortgage Licensee, License # 22564; NMLS#6606. Subject to borrower and property qualifications. Not all applicants will qualify. New American and New American Funding are registered trademarks of Broker Solutions Inc. dba New American Funding. All Rights Reserved. Corporate Office is located at 14511 Myford Road, Suite 100, Tustin CA 92780. Phone (800) 450-2100. 11/2022.



## In Memory of Will Theus Quaile

In Memory of Will Theus Quaile, 92, died at her home at Isle of Hope on the 20th of September 2022.

She was born in Savannah on March 31, 1930, to Will Hawkins Theus and Charlton Mayer Theus, Sr.

She grew up in the house where she died; her family had owned the house for about 100 years.



*"Charlotte and her mother, Will...  
Anyone that traverses  
Bluff Drive regularly,  
way early in the morning in  
particular, will see at least one,  
if not both of them.*

*If they're not walking together or  
riding together on a tandem bike  
then Charlotte will be out by herself  
tapping her way all the way from  
home to the Wymberly Dock and  
back. It's always a pleasure to me  
when our paths cross."*

Excerpted from *Isle of Hope* -  
The Photography of  
John Samuel (Sammy) Moore

## RELIABLE SEPTIC SERVICES INC.



Installation and repair of septic  
systems

Residential and commercial

Septic Tank Pumping

Drainfield Restoration

[www.reliablesepticinc.com](http://www.reliablesepticinc.com)  
(912) 604-3088

15 Dorothy Dr, Savannah, GA 31406  
[reliablesepticinc@gmail.com](mailto:reliablesepticinc@gmail.com)



AVOID HIGH IRRIGATION COST  
WITH YOUR OWN WELL  
WATER  
Over 35 Years Experience



McClain's

Shallow Wells

Free Estimates

(912) 355-5442





## Weekend Brunch Saturday & Sunday

*The Shops at Sandfly*

**10am - 3pm**

[5spotrestaurant.com](http://5spotrestaurant.com)

THE  
PERFECT  
GIFT... *for everyone on your list!*



We'll add \$5  
for every \$20  
purchased on  
gift cards  
now through  
Dec 31st!

912-963-1914 / [www.5spotrestaurant.com](http://www.5spotrestaurant.com)

Order online, call or purchase at any of our restaurants!  
\$5 will be added to all eligible online orders after purchase is complete.



# Memories of an Island

BY RUTH BRIGHT WRIGHT

*Ruthie tells the story of her family's life at Isle of Hope while also giving the history of Isle of Hope's development from colonial times. Background information is given for Bluff Drive houses, island events, such as baptisms on the Bluff, as well as Isle of Hope characters, including Nanny Roberts and Sim Jordan.*

## A Little History

Isle of Hope is a quaint little village about seven miles from Savannah. There are two beautiful drives that lead from the city to the island. La Roche Ave winds through palm trees and oaks and connects to a bridge on one side of the island.

Skidaway Rd travels through the community of Sandfly and across the marsh to the causeway which leads to the gates of Wormsloe. This causeway is lined with palm trees planted more than 75 years ago as a tribute to World War 1 soldiers. In 2007, 10 more trees were planted to replace those lost in past years. These trees were dedicated to the troops serving in Iraq and Afghanistan.

Situated on a high bluff on the Skidaway River the island is shaped like a horseshoe and is home to many families. Bluff Dr. follows the bends of the river and with the cooling breezes that flow onto the island.

The walkers and joggers are given a relaxation of mind and heart. Sometimes the light from

the sky reflects colors of gold, rose and green and a seagull will light on the calm water and surround every passerby with peace. The old fashioned white picket fences, the magnificent oak trees, enormous azalea bushes with their different color blooms and the magnolia trees with their white fragrant blossoms all welcome newcomers to our island with the hospitality for which Southerners are known. Children ride their bikes and learn to swim as early as they learn to walk. There is never a stranger for long, as everyone on the island is eager to welcome each other with a smile or a wave.

*In the next issue:*

**How did Isle of Hope get its name?**

# HORIZON STAFFING



Thank You  
for Voting  
**Horizon  
Staffing**  
as Best  
Employment Agency!

**7722 Waters Ave  
Savannah, GA 31406  
912-355-5966**

**[www.horizonstaffing.com](http://www.horizonstaffing.com)**



**OPEN TUESDAYS AND  
THURSDAYS FROM 10-2**

**ACCEPTING  
NEW PARTICIPANTS!**

Hope Arbor enriches the lives  
of adults with memory loss  
through fellowship  
and engaging activities,  
while providing resources and  
support for families and caregivers  
in the Savannah Community.

If you are interested in  
Hope Arbor, please contact  
Brooke Chambers at  
[bchambers@iohumc.com](mailto:bchambers@iohumc.com)  
or 912-355-8527

**Our Hope Arbor Care  
Partner Support Group meets**

*every Tuesday at 10:15 on the IOHUMC campus.*

All family Caregivers supporting loved ones with memory  
impairment are invited to join this encouraging group.



# Mathnasium Transforms Lives Every Day.

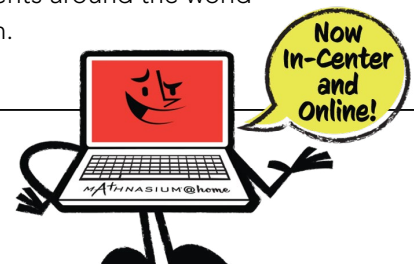


## *Students get the tools to work toward their full potential*

We see it all the time. Kids come into Mathnasium who are struggling with math, and after only a short time, they actually begin to love math. Yes, love it. Or we see kids come in who are advanced in math but not being appropriately challenged, and we're able to re-engage them. Because unlike other learning centers, the Mathnasium Method™ focuses as much on the emotional aspects of learning as it does on the technical aspects. And we teach math in a way that makes sense to kids. Which means creating a learning environment that's dynamic, reward-based, and fun. It's why parents around the world rave about the stunning transformation they've witnessed in their children.

**Contact us today to schedule a free trial!!**

**Mathnasium of Savannah**  
(912) 355-5678 • [mathnasium.com/savannah/about](http://mathnasium.com/savannah/about)  
7400 Abercorn St, Savannah, 31406 (next to TJ Maxx)



*Changing Lives Through Math™*

**MATHNASIUM®**  
The Math Learning Center



Isle of Hope News  
1 St. Thomas Avenue  
Savannah, GA 31406

PRSRT STD  
ECRWSS  
U.S. POSTAGE  
**PAID**  
EDDM-Retail

**Local  
Postal Customer**

*Call Jessica Gilstrap for  
All Your Mortgage Needs*

**SUPREME  LENDING®**

**THE *Ability* TEAM**

Capability · Reliability · Accountability

Jessica Gilstrap Loan Officer NMLS #1363393  
Direct: (678) 981-5087 Cell: (678) 938-0977  
Jessica.Gilstrap@SupremeLending.com  
Jessicagilstrap.supremelendinglo.com  
1525 Pennsylvania Ave. McDonough, GA 30253

*apply here*



ADVERTISEMENT. EVERETT FINANCIAL, INC. D/B/A SUPREME LENDING NMLS ID #2129 ([www.nmlsconsumeraccess.org](http://www.nmlsconsumeraccess.org)) 14801 Quorum Dr., #300, Dallas, TX 75254. 877-350-5225. Copyright © 2021. For licensing information go to: [www.nmlsconsumeraccess.org](http://www.nmlsconsumeraccess.org). Intended for STATE consumers only. Florida Mortgage Lender Servicer License MLD909. Georgia Mortgage Lender License 22114. Georgia Residential Mortgage Licensee