

IOH Historical Association Update

BY NOEL WRIGHT
& POLLY COOPER

On July 30th, the annual meeting of the Isle of Hope Historical Association was held at St. Thomas Church followed by a sumptuous buffet dinner prepared by Chef Kirk Blaine. Members gathered to hear reports from President Dan Willoughby, Vice President Tiffany Alewine, and Secretary and Treasurer Mark Lisicia. The IOHHA, which was established in 1977, elected new directors and officers last August. The organization under its new leadership is determined to protect the island's special heritage with three goals: (1)



The Teidemann house which burned to the ground in 1933.

collecting and presenting the history of Isle of Hope to the community; (2) sponsoring events to build community spirit and promote homecoming; (3) spearheading

an initiative to preserve Isle of Hope's historic character by protecting our Bluff area. President Dan Willough-

- Continued on page 3 -

IOH Art and Music Fest Oct. 22

FOOD TRUCKS

Ark Royal
Bayou Cafe
Ben & Jerry's
The Big Cheese
Dark Shark - Taco Attack!
Down South Cheesesteaks
The 5 Spot
Kona Ice
Tier One Nutrition

BANDS

3rd Infantry Division Army Brass Band
Savannah Philharmonic
Anders Thompson Trio
Isaac Smith Band
Voo Doo Soup
Monkey Man

SOME OF THE MANY VENDORS

Chris Roberts	Noel Wright Woodturner
Dale's Crab Traps	Parkersburg Garden Club
Fronde and Fern	Planted in Savannah
Kelli Mills Photography	Polly Wylly Cooper
Marsh & Co.	Sebrell Smith Events

One More Grad



Carson Gay
Savannah Country Day

Front Porch

BY CHRIS BRANTLEY, EDITOR

Mary Grace was born first, and I was so young and naive. Lauren and I were sleeping on a friend's futon for a few months during one of the darkest periods in my life when we found out she was on the way. We were married, and I knew it was a possibility, but until Lauren handed me those little sockies, I was oblivious.

But when I found out, I was not nervous, scared, or stressed. I merely felt elation like this is what I was born for. It was like something in me came alive.

So after she was born, they just put her in the back seat of our car. I didn't have to



Mary Grace and Daniel celebrating their engagement with the family.

take a parent safety course or anything. I was so nervous driving back to Atlanta from Athens. I looked in the rearview constantly as we

drove down 316. Her head flopped around like she had no neck bone. I looked down at the speedometer and was going 35 in a 75.

Such is fatherhood.

A pivotal moment when "Butterfly Kisses" goes from the cheesiest song in the world to a tune that made me

Isle of Hope News

The Isle of Hope News is a quarterly publication serving Isle of Hope area residents & advertisers.

It was started by Isle of Hope resident Ed Yannett in 2011 and mails to 2,400 residents in Isle of Hope, Dutch Island, and surrounding areas.

- Continued on page 7 -



Herb Creek Sandfly
7402 Skidaway Road
912.691.0108

Herb Creek Thunderbolt
3005 E. Victory Drive
912.356.1575

Meet Me at THE CREEK

PALMS | TREES | TROPICALS
SHRUBS | ANNUALS | PERENNIALS
FOUNTAINS | STATUARY
POTTERY | HOME DECOR
Locally Owned + Operated

HERB CREEK
LANDSCAPE SUPPLIES



herbcreek.com

Historical Association

- Continued from page 1 -

by also serves as chairman of the board. Vice President Tiffany Alewine, also a board member, oversees membership and special events. Mark Lisicia, the third board member, serves as secretary and treasurer and is in charge of special projects. At the meeting, Tiffany provided an overview of the current membership and outreach efforts, as well as presenting a report on past and upcoming events. Mark gave a detailed treasurer's report showing that the Association is fiscally sound and well-managed.

Dan's report focused on the Association's progress against its three goals. First, the Association is presenting local history to its membership by periodically publishing our journal, "The 1736 Gazette" and by sending emails with articles of IOH historic interest to members. Most importantly, the Association developed a new website at www.iohha.org. To contain costs, the website was created inhouse under Mark Lisicia's leadership with members volunteering their time and talents. Sly Knight contributed endless hours and his website expertise to the project. Joe Roberts and June Strickland proofed each and every page. The website contains a large collection of historic documents, memoirs from Isle of Hope residents going back to Civil War days,



World famous Barbee's Restaurant, Pavilion, Crab/Oyster factory & Turtle farm on Bluff Drive. The original building burned down in 1902, and this building was built immediately thereafter.



Mr. Blissett standing proudly in front of his store on Bluff Drive.

postcards and pictures, and biographies of important Isle of Hope residents. Our website has received over 11,000 views to date!

Perhaps the most interesting area on the website is the map collection. A Map Committee, including Lewis Strickland, Karl Schuler, David Anderson, and Jim Sickel, began last year gathering maps of Isle of Hope, many brittle and yellowed with age. They have accumulated over 100 maps. Sixteen are now available for viewing on the website. Ten of those sixteen website maps are

the result of projects by the Map Committee to present new views of Isle of Hope by modifying larger maps to focus on Isle of Hope or by assembling pieces of old maps into a consolidated map of Isle of Hope. At the meeting, Polly Cooper donated a 1917 Gardner map of Savannah which shows the location of some Spanish American War (April 25th, 1898 - Dec. 10, 1898) army camps. The map originally cost .35 cents. Please visit the website at www.iohha.org and enjoy

- Continued on page 4 -

Historical Association

- Continued from page 3 -

the maps and other historical information.

Second, the Association's first community building event was the revival of the Christmas Tree Lighting at Paxton Park, which had not occurred for over fifteen years. Selma Bernard and Polly Cooper headed up this well attended event. The Association will again host this event this December. The Association is also sponsoring the Isle of Hope Art and Music festival this year on October 22nd. It was last held in 2019 but was suspended for two years because of the

pandemic. Erica Wilson and Holley Jaakkola are organizing this event, which fosters reunions, family gatherings, and pure fun.

Third, regarding preservation, the Association has worked diligently over the last year to establish a Local Historic District focused on the Bluff area. Isle of Hope was designated as a federal historic district in 1984. Unfortunately, this federal designation provides protection in only certain situations. It has no "teeth" in protecting the character of the Bluff area in most circumstances. The Bluff area is a unique area with significant history, and it needs broad protection now for future generations.

We need a Local Historic

District designation to ensure that the Bluff area is protected from unwanted demolitions and inharmonious development. There are many hoops to jump through to obtain this worthy and essential objective, including submitting an application to the Metropolitan Planning Commission staff, followed by review by the Chatham County Historical Preservation Commission, and then a vote by the Chatham County Board of Commissioners. The association retained Ethos Preservation, a leading historic preservation consulting firm led by Ellen Harris, a former official with the Metropolitan Planning Com-

- Continued on page 6 -



Savannah Family Eye Care
FAMILY FOCUSED
Eye Exams, Glasses & Sunglasses for **the whole family!**

SavannahFamilyEyeCare.com | 912.235.2798 | 513 E Oglethorpe Ave | Suite F, Savannah



YOUR LOCAL
ALL-PRO LENDER
FOR HOME FINANCING!



SCAN TO APPLY!

Kelley Sullivan

Sales Manager | NMLS # 213216

C: (912) 844-2593

Kelley.Sullivan@nafinc.com

www.SavannahHomeLoan.com



Georgia Residential Mortgage Licensee, License # 22564; NMLS#6606. New American and New American Funding are registered trademarks of Broker Solutions Inc. dba New American Funding. All Rights Reserved. Corporate Office is located at 14511 Myford Road, Suite 100, Tustin CA 92780. Phone (800) 450-2100. 06/2022.

BANK STATEMENT LOAN

**NO INCOME
VERIFICATION LOAN**

SELF-EMPLOYED

**3% DOWN
CONVENTIONAL**

**INVESTMENT
PROPERTY LOANS**

AND MANY MORE



*where a trip to the dentist
is a day at the beach*

NEW PATIENT SPECIAL

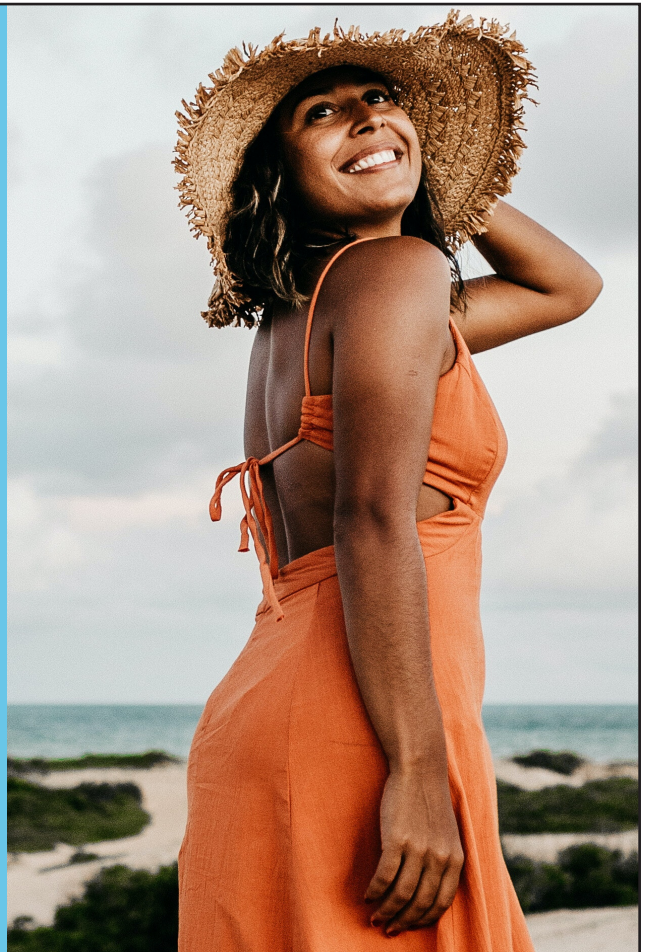
\$149 Exam, Cleaning
and X-Rays

& Get \$100 In-Office Bleaching
When You Get Your Teeth Cleaned

7360 SKIDAWAY RD, SUITE H-2

912-349-0472

WWW.SANDFLYFAMILYDENTAL.COM



Historical Association

- Continued from page 4 -

mission, to guide us through this difficult and complex process. Ellen Harris relates, "Much of Isle of Hope is listed as a historic district on the National Register. This federal designation provides very limited protection for historic resources. The only protection it provides is when there are federal funds or permits involved on a project. The most effective way to preserve historic resources and the character of an area is through designation as a Local Historic District. Not only does this ensure that historic resources are preserved, and new construction is compatible, but it also establishes a process that the community is notified when major changes are proposed and allows for the community to attend and comment."

Prior to obtaining the local historic district designation, architectural standards for the proposed historic district must be developed. The Association, with the help of Pam Allen, developed standards over several months with the input of Ethos, Association members, and neighbors. These standards would apply only in the proposed district, which has 28 properties. 23 of the 28 properties are residential properties. After much work by the Association, 20 of the 28 prop-

- Continued on page 10 -



LET ME HELP YOU WITH
YOUR HOLIDAY GIFTS! WE
HAVE SOME GREAT GIFT
SETS COMING IN
SEPTEMBER.



SCOUT & CELLAR®

CLEAN-CRAFTED WINE

WINE CONSULTANT

Lisa Yarnett

912-596-4345

www.scoutandcellar.com/uncorkwithme




Scan me



AVOID HIGH IRRIGATION COST
WITH YOUR OWN WELL
WATER

Over 35 Years Experience



McCain's

Shallow Wells

Free Estimates

(912) 355-5442

Front Porch

- Continued from page 2 -

blubber in the parking lot of St. Mary's Hospital in Athens.

The first night she cried so loud, and as I lay my head at the foot of the bed, I would stick my knuckle in her mouth, and she would settle down.

My little princess peed and pooped on me, but I didn't care. I thought she was the most beautiful thing in the world. I spent weeks showing pictures of her with me cutting her bloody umbilical cord before my wife gently told me that was probably not appropriate.

Some nights I would wake up in the middle of the night, walk into her room, and she would not appear to be breathing. So I would stick my hand under her nose just to make sure. Whew!

Fast forward to July 4th weekend. It is Saturday the 2nd, and as we get ready to leave to go out in the boat. Her long-time boyfriend, Daniel, asks if he can talk to me ALONE. Now I know what that means, and I am dizzy. I had been thinking about tides, weather, current, and anchoring on Ossabaw, but now I am simply trying to stay upright.

I gather myself, thanks to a quick shot of bourbon, and head to the Marina. My head does not stop spinning until we get to Raccoon Key. Then I feel peace.

I have no doubts that this guy loves her, and she loves

- Continued on page 12 -



Crossroad ANIMAL HOSPITAL

Ernest Compton, D.V.M.
Melanie S. Bevere, D.V.M.
Stuart Ann Goldberg, D.V.M.
Mary Kelble, D.V.M.

1201 E. Montgomery Crossroad
Savannah, GA 31406

(912) 927-4343
www.crossroadah.com



FOOD TRUCKS
LIVE MUSIC
ARTISTS

ISLE OF HOPE

ART & MUSIC FESTIVAL

SAT | OCT 22, 2022 | 10-8PM
MUSIC 10-8PM IOH MARINA

ARTISTS ON BLUFF DRIVE,
ISLE OF HOPE PAVILION + PAXTON PARK

PROCEEDS DONATED TO
ISLE OF HOPE HISTORICAL ASSOCIATION
RAIN OR SHINE EVENT

iohha.org
iohartmusicfest@gmail.com
iohartmusicfest.com

Ask?

Mr. Ed

Straight From The Horse's Mouth



Your Next Chapter: Dealing With Your Family House?

BY ED YANNETT

As a real estate agent, I have assisted several dozen older clients in selling their homes. This will happen to everyone. We're all getting older. At this point in time, you say to yourself, WOW, mom and dad really lived in this house for 30, 40, or 50 years! You'll have spent a lifetime in this house filled with memories and mementos from everyone involved. What a HUGE ordeal! It feels like an impossible task when it's time to sell, but WE GOT THIS!

The first step in this multi-step process is to get the house ready to sell! Over the next few newsletter issues, I will share with you what you need to do to get this job done! So keep this in mind when you hire us as your family real estate agent. We will handle everything. Our goal is to make this process easier and give you something we are all



short of...more TIME. We do it all except the first step below!

Step 1: Start by sorting through everything, so let's separate things into four piles: keep, sell, donate, and trash. It is most challenging to decide what to keep and what to let go of! When decluttering, a general rule of thumb is to get rid of it if you haven't used it in the last six months. OMG, that is way easier to say than do when dealing with a lifetime of STUFF! But let's keep this in mind and get busy!

Keep - This is the hardest part of the process, figuring

out what you and the family want to keep. But the good news is this is the ONLY step in the process you'll have to take care of if you hire us! Deciding what to keep and what to get rid of is emotionally taxing but needs to be done first! Our advice is to rip the bandaid off. Remember, when your time is up, no one ever said, I wish I had MORE stuff! It is just stuff, and we must keep our eye on the prize -- more time, more time to enjoy life, more time for family, and an easier life!

Sell - Now the hard part is done; it's downhill from here!

Time for the Tag/Estate Sale to put a little money in your pocket! You can do the sale yourself, or our team can handle it. Just give us the go-ahead. It's as good as done. Whittling down the stuff for the Keep pile was rough, but for the SELL pile, we got this part down pat. We have a ton of experience handling the Tag/Estate Sales for other clients. The sale will give you extra cash to help with the process and any extra expenses you will incur! The best part of the Tag/Estate Sale is it is part of our secret marketing tactic to get the house SOLD! Ask us how this works. We got this!

Donate - This one is easy! Believe it or not, you will make or save a little money here too! Whatever is left, we call Goodwill for a pickup. Or you can use another charity you might want to donate to. We LOVE Goodwill, for no other reason than they PICK UP, EASY! They will also give you a receipt for the value of the items donated for a fat tax write-off. So you can make or save more money on your taxes. That's a good thing! We can set this up with Goodwill!

Trash - ALMOST DONE! Depending on the amount of



stuff that's left in the house, we have two options. The easiest one is to take it to the curb and leave it for a special city or country trash pickup. Or, if a substantial amount is still in the house, rent a dumpster. We have workers who can load it up and clean out the house. No problem, still easy, but it can cost a little more.

This process will be one of the hardest things you'll ever do; trust me, we all have to deal with this, and it SUCKS! I've helped my mom do it, and Lauren has done this with her parents, so it is not lost on us

that this is freaking HARD!

Being a real estate agent is very satisfying. Buying a home is the most important thing a person can do. Selling a home can make you a huge amount of money when you live there for a long time. Making deals is what I LOVE! But this is different! This is about your family, your life, and sometimes your life savings! This is when you can be at your most vulnerable, and you need someone you can trust, an advocate who will do the job compassionately! Please reach out with questions.



Lisa, Ed & Lauren

**Direct: 912-596-4345
or 912-844-9000
or 912-355-5858**



Historical Association

- Continued from page 6 -

dential property owners, 19 voted in favor. This amounts to an overwhelming majority of 83% supporting the proposed district!

The Association submitted its application to the staff of the Metropolitan Planning Commission. That application was reviewed by the staff and a recommendation was made to the Chatham County Historic Preservation Commission. The Commission held a public hearing on the Association's application on July 6th with an opportunity for public comment. Many Isle of Hope residents attended. Dan Willoughby made the presentation on behalf of the Association requesting designation of the historic district. Several current and former Isle of Hope residents spoke strongly in favor of the approval of our application, including Spencer



Bluff Drive, Barbee's Pavilion

Photo Submitted

Lawton, Chris Melroy, Noel Wright, and Barbara Portman Meyer. Attorney Robert McCorkle had been retained by a few opposing property owners and spoke in opposition. Several Isle of Hope residents spoke in opposition, but none of those opposing residents lived in the proposed historic district. The Commission voted

to approve the Association's application.

The next step is the most important: we must succeed with a vote by the full Chatham County Commission! There are nine Chatham County commissioners, including District 1 Commissioner Helen Stone, who represents Isle of Hope. The process will occur over two Commission meetings. At the first meeting, our application will be read for the first time to the Commissioners. There will be an opportunity for public comment at this meeting but there will be no vote. Then, there will be a second meeting. There will be a second opportunity for public comment and there will be a vote on the application by the Commissioners. The review of our application at the first reading was set

- Continued on page 11 -

RELIABLE SEPTIC SERVICES INC.



Installation and repair of septic systems

Residential and commercial

Septic Tank Pumping

Drainfield Restoration

www.reliablesepticinc.com

(912) 604-3088

15 Dorothy Dr, Savannah, GA 31406

reliablesepticinc@gmail.com



Historical Association

- Continued from page 10 -

for August 26th but has been postponed to a date to be determined.

It is vitally important for as many Isle of Hope residents as possible to attend the Commission meetings and speak strongly in favor of creating a local historic district. Without the district being approved, we face the real danger of Isle of Hope's Bluff area becoming another Thunderbolt. Spencer Lawton, retired district attorney, reminded everyone at the Association's annual meeting how critical it is that we go before the County Commissioners with a large supportive crowd. "Even if you simply take the microphone and give your name saying you are 100% in support of the local historic district, it will make a lasting impression on the commissioners." One member at the meeting was heard saying, "I pray this local historic district ordinance will protect us from looking like Thunderbolt! They can hardly see the river anymore due to those condos." We want to be clear that the application along the Bluff area only incorporates the 28 properties in the application. It does not include the entire island.

The discussion at the annual meeting moved next to an exciting initiative of rehabilitating two streetcars that were generously donated to

the organization. As Isle of Hope was serviced by streetcars from the 1869 to 1946, they are an important part of our history. Different types of streetcars serviced the is-

land at different times. The streetcars to be rehabilitated were made by the Birney Manufacturing Co. and were

- Continued on page 14 -



Industrial/Warehouse
Clamp Operators
Production/Assembly Line
Clerical/Administrative

7722 Waters Avenue
Savannah, GA 31406

HORIZON
STAFFING 912-355-5966

Locally owned and operated
by Isle of Hope resident
Lisa Brantley Yannett



Apply at www.horizonstaffing.com



OPEN TUESDAYS AND THURSDAYS FROM 10-2

ACCEPTING NEW PARTICIPANTS!

Hope Arbor enriches the lives of adults with memory loss through fellowship and engaging activities, while providing resources and support for families and caregivers in the Savannah Community.

If you are interested in Hope Arbor, please contact **Brooke Chambers** at bchambers@iohumc.com or 912-355-8527



Our Hope Arbor Care Partner Support Group meets every Tuesday at 10:15 on the IOHUMC campus.

All family Caregivers supporting loved ones with memory impairment are invited to join this encouraging group.

Front Porch

- Continued from page 7 -

him. And a bonus, I really like him.

So now we are sitting on the beach. Lauren and MG are in the water. He looks over and asks for her hand. I don't remember the exact words, as if they matter at a time like this. I stand up, shake Daniel's hand, hug him and welcome him to the family...and tell him I'll kick his ass if he hurts her. The last part is fiction.

I look out to the river, and MG has her face to the horizon, but my wife is looking back, and she knew when I gave this kid a hug. She tells me the perfect Van Morrison song was playing from a nearby boat when it happened.

"These are the days of the endless summer
These are the days, the time is now
There is no past, there's only future
There's only here, there's only now..."

I thought I would think about money and how much it would cost, but I didn't. Instead, I thought about how happy my daughter would be when Daniel knelt down and slipped the ring on her finger.



*"Putting your
mind at ease in
the comfort of
your own home."*



Our Services Include:

Companionship - Personal Care
Meal Preparation - Exercise & Recreation
Medication Reminders - Light Housekeeping
Doctors Appointments - Outings & More

Post Office Box 23194 | Savannah, GA 31403

Call Today! 912-596-4917

Office Hours: Monday-Friday 9:00 AM - 6:00 PM
Saturday & Sunday 10:00 AM - 2:00 PM

VickiesHelpingHands.com
info@vickieshelpinghands.com

VISA | MasterCard | Discover | American Express | PayPal
Money Orders | Venmo | Zelle | ApplePay | Google Wallet | CashApp

**24 HOUR
SERVICES
AVAILABLE**



PITCHING SHUTOUTS SINCE 1928

We threw out our first pitch 94 years ago, and
we've been striking out pests ever since.

In fact, their record against the Yates-Astro
team is a perfect 0 for 94.



Yates-Astro
Termite & Pest Control

912-651-9000
www.Yates-Astro.com

Mathnasium Transforms Lives Every Day.



Students get the tools to work toward their full potential

We see it all the time. Kids come into Mathnasium who are struggling with math, and after only a short time, they actually begin to love math. Yes, love it. Or we see kids come in who are advanced in math but not being appropriately challenged, and we're able to re-engage them. Because unlike other learning centers, the Mathnasium Method™ focuses as much on the emotional aspects of learning as it does on the technical aspects. And we teach math in a way that makes sense to kids. Which means creating a learning environment that's dynamic, reward-based, and fun. It's why parents around the world rave about the stunning transformation they've witnessed in their children.

Contact us today to schedule a free trial!!

Mathnasium of Savannah

(912) 355-5678 • mathnasium.com/savannah/about
7400 Abercorn St, Savannah, 31406 (next to TJ Maxx)



Changing Lives Through Math™

MATHNASIUM™
The Math Learning Center

Historical Association

- Continued from page 11 -

used in Savannah, including Isle of Hope, beginning in the 1920s. These were the safest and most efficient of the time. In fact, they were named, "Birney Safety Cars."

After these two cars were decommissioned from service, they were incorporated into a cottage on north Isle of Hope. A campaign to fund the project of one car using the parts from both cars is underway.

The streetcar will be a tangible piece of our history and will be placed on display on the island. Progress has been made on the project. The cottage has been deconstructed. The streetcars have been moved from Isle of Hope and placed in storage until the rehabilitation occurs.

Meanwhile, we invite you to join the Isle of Hope Historical Association.

Just go to www.iohha.com and sign up. Memberships start at \$50 per household



IOHHA Plans to Restore IOH's Birney Safety Streetcar

and include:

Our quarterly newsletter, "The 1736 Gazette";

Regular email blasts with information about Isle of Hope's history;

Recognition in IOHHA publications;

An invitation to members-only events; and
A gift from IOHHA.



ISLE OF HOPE
Historical Association

JOIN THE FUN!

BECOME A MEMBER NOW AT

WWW.IOHHA.ORG/MEMBERSHIP



SANDFLY FLOWER SHOP



A FULL SERVICE FLORAL STUDIO
AND GIFT BOUTIQUE

8419 Ferguson Avenue 912.604.6852 @sandflyflowershop



"The freshest catch since 1870"
Seafood, Chicken, Pork and Beef
(912) 920-3474

Support Your Neighbors, BUY LOCAL!!

Celebrate With OYSTERS!

Salty Georgia Oysters

Bluffton Oysters

Stump Bay North Carolina Oysters

St James River Virginia Oysters

Chesapeake Bay

Maryland Oysters

Long Island Blue Points

Texas Oysters

Apalachicola Bay

Florida Oysters



Isle of Hope News
1 St. Thomas Avenue
Savannah, GA 31406

PRSRT STD
ECRWSS
U.S. POSTAGE
PAID
EDDM-Retail

**Local
Postal Customer**

*Call Jessica Gilstrap for
All Your Mortgage Needs*

SUPREME  LENDING®

THE *Ability* TEAM

Capability • Reliability • Accountability

Jessica Gilstrap Loan Officer NMLS #1363393
Direct: (678) 981-5087 Cell: (678) 938-0977
Jessica.Gilstrap@SupremeLending.com
Jessicagilstrap.supremelendinglo.com
1525 Pennsylvania Ave. McDonough, GA 30253

apply here



ADVERTISEMENT. EVERETT FINANCIAL, INC. D/B/A SUPREME LENDING NMLS ID #2129 (www.nmlsconsumeraccess.org) 14801 Quorum Dr., #300, Dallas, TX 75254. 877-350-5225. Copyright © 2021. For licensing information go to: www.nmlsconsumeraccess.org. Intended for STATE consumers only. Florida Mortgage Lender Servicer License MLD909. Georgia Mortgage Lender License 22114. Georgia Residential Mortgage Licensee

